

# Monthly Newsletter

October 2024



## Curriculum News

It is hard to believe that we are already closing in on the end of this half term. The children and staff have all been working incredibly hard and have thoroughly enjoyed their teaching and learning. Particular highlights have included, Larks Victorian toy museum (with guest speaker), some amazing writing in Robins inspired by their class novel, some impressive scientific enquiry in Owls (focus: electricity) and the talented design technology skills of our bakers in Swans!

Robins and Larks have been developing their communication and problem solving skills in forest school; Owls have enjoyed taking their cornets home to continue their music tuition and Swans have excelled in their Mayan work with archaeologist Dr Dianne!



## 1 STEM Share Afternoon

We are excited to welcome families into school on Thursday 7th November to celebrate all things STEM (Science, Technology, Engineering and Maths). I will be delivering a launch assembly before we go off into classrooms to complete some exciting class challenges! We look forward to welcoming you all.

Do you have a career in STEM? Would you like to share more about your role in the launch assembly? Speak to Mt Varela.



## 2

## Sport at Great Whelnetham

We have had a fantastic start to the school year in relation to sports. The children have enjoyed before and after school clubs, including rounders, football and gymnastics. Swans/Owls have been receiving specialist coaching from the Ipswich Town Foundation. Already this year, we have entered the cross country, football, quick sticks hockey, and have many more booked in the diary.

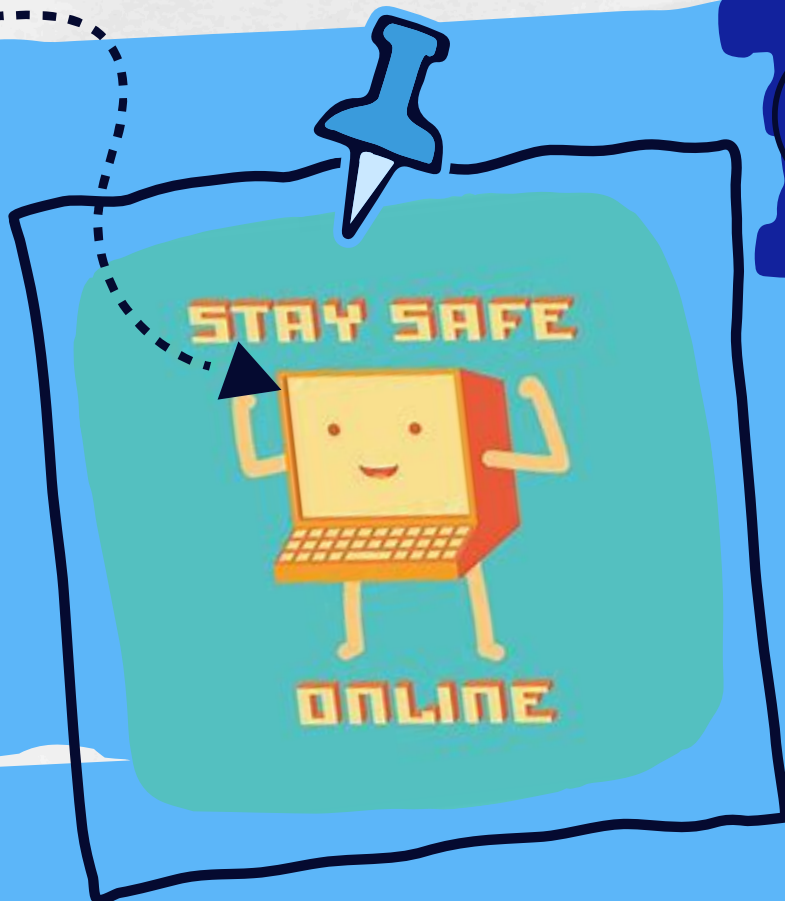
A special mention to Arthur and Luke who qualified for the county events after their impressive display at the recent cross-country event. We are so proud of you. Our sports leaders have also been developing their role to coach younger pupils in the fundamentals of sport during lunchtime.



## 3 Safeguarding Update

This month's safeguarding update is linked to online safety. More and more pupils in EYFS and KS1 now have their own devices. Please watch the video and follow the top tips for keeping them safe online. The internet can be a fantastic resource for recreation and learning when used safely. If you have any questions, please do not hesitate to contact staff for extra support.

<https://www.youtube.com/watch?v=O3OF-NWDzGo&t=1s>





# Great Whelnetham Church of England Primary School

NURTURE - GROW - SUCCEED TOGETHER

## Dates for your Diary

- 15th/16th October - Parents Evening
- 22nd October - Harvest Festival at the Church 9:30am
- 25th October - PTFA - Funny Friday
- W/C 28th October - Half Term
- 7th November - STEM day Share afternoon
- 8th November - Flu Vaccinations at school
- 11th/12th/13th November - Year 4,5, & 6 Residential trip to Norfolk Lakes
- 20th November - SEND cafe (afternoon session)
- 27th November - Open Day - New Intake 2025
- 4th December - Whole school Panto trip
- 10th December - Christmas Story retelling @ the Church 'KS1' (AM)
- 11th/12th December - PTFA - Christmas Shop
- 12th December - Wear a Christmas Jumper Day
- 12th December - Christmas lunch
- 13th December - RockSteady Concert (PM)
- 17th December - Christingle Assembly (PM)
- 19th December - Last day of term

**BEST WISHES  
MR VARELA  
HEAD OF SCHOOL**